

Adopted Budget 2021/2022

Budget summary

Council has prepared a \$41.48 million budget for 2021/2022. The increase in average rate revenue collected across the shire will be capped at 1.5% on last year in line with caps set by the Victorian Government. Rate changes for individual properties may be higher or lower than 1.5%, due to annual property revaluations. Kerbside bin collection charges will not increase this year.

Capital works

\$11.98 million for capital works includes:

Roads – \$3.38m includes \$1.43M for Fogarty's Gap Rd, \$396K to design Diamond Gully Rd intersections at McKenzie Hill, \$558K to reseal local roads and \$683K to resheet gravel roads, \$150K for Spring St Maldon, plus \$170K for design and minor works.

Bridges – \$200K to design new bridges.

Walking and cycling – \$1.6M includes a new footpath along part of Campbells Creek Fryers Rd and completing the missing link in the Campbells Creek walking and cycling trail.

Plant, equipment and technology – \$1.25M including a Welcome to Country installation at the Castlemaine Market Building, two new electric vehicles (EV) and two EV charging stations.

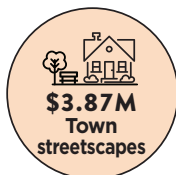
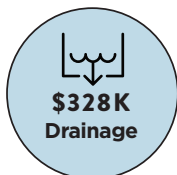
Parks and recreation facilities – \$1.24M includes replacing lights at the Newstead Recreation Reserve \$410K, designing pavilion and netball courts at Castlemaine's Camp Reserve \$400K, \$120K for priority pool works, \$150K for renewal of recreation facilities, and \$81K for designing female friendly change facilities at Maldon's Bill Woodfull Reserve.

Flood Protection and drainage – \$328K Castlemaine and Campbells Creek levee works \$243K, Newstead levee \$40K.

Town streetscapes – \$3.87M includes Maldon rejuvenation \$2M, Guildford and Chewton \$908K, Newstead \$592K, and Elphinstone, Taradale and Campbells Creek \$367K.

Waste – \$105K for replacement and upgrade of public place recycling bins.

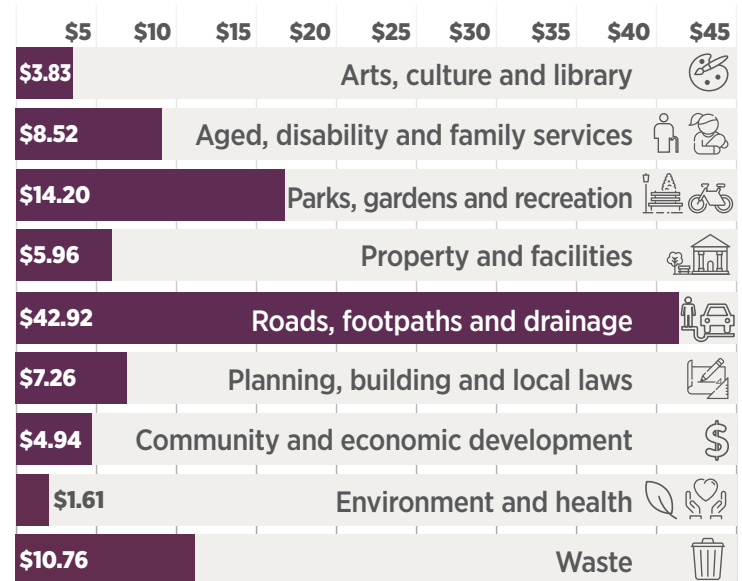
Major capital works



Your rates at work

This summary outlines how Council will maintain and improve infrastructure and deliver projects and services valued by our community. It includes costs to manage and maintain local foot and cycling paths, roads, bridges and drains, rubbish and recycling collection, delivering maternal and child health care programs, aged care and disability services, youth programs, emergency relief and recovery, animal control, planning, tourism services, the maintenance and improvement of play spaces, public gardens and more.

Council spending per \$100



Highlights

Indigenous Recognition – Welcome to Country Dja Dja Wurrung Country cultural project in the Castlemaine Market Building. **\$400K**

Waste – Capping the Castlemaine landfill. **\$1.5M**

Climate Change – A new online platform to monitor Council's carbon output and energy savings **\$9.9K**, two new electric vehicle chargers for the Council fleet **\$20K** and two new electric vehicles.

Heritage Protection – A shopfront study in Maldon as part of the Maldon Streetscape rejuvenation. **\$40K**

Economy – Hosting the Mount Alexander Shire Business Awards. **\$15K**

Roads – Making Fogarty's Gap Road safer between Woodbrook and Leversha Roads. **\$1.42M**

Community – Designing a multi-use community space at Taradale's disused tennis courts. **\$30K**

Rail Trail – Castlemaine to Maryborough Rail Trail Feasibility Study. **\$6K**

Read the budget

A hard copy is displayed for public viewing on-site during work hours at Council's Customer Service Centre in the Castlemaine Town Hall or view the budget online at www.mountalexander.vic.gov.au/budget.