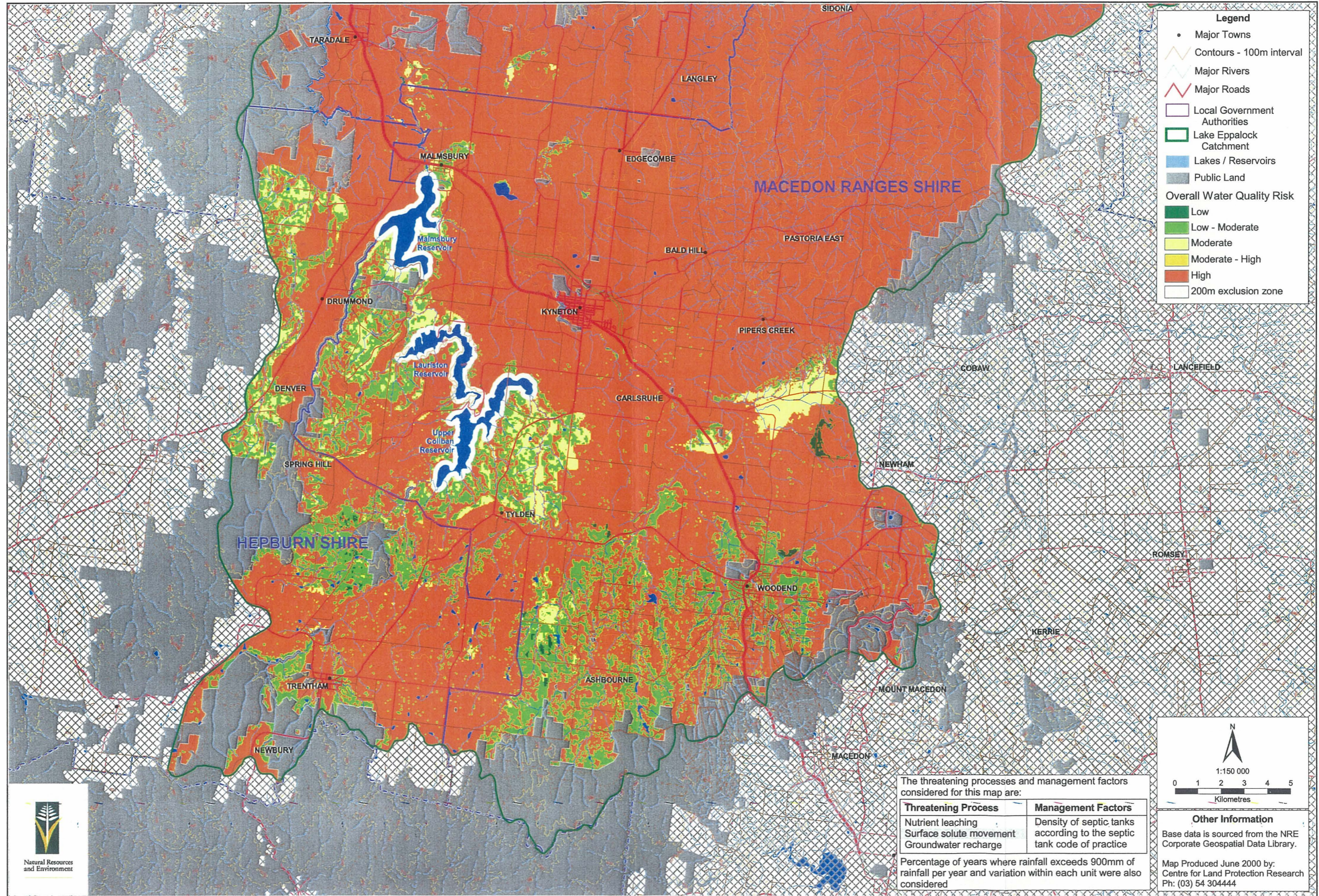


Map 3.6b Risk of Septic Tank Effluent Disposal on Water Quality, Southern Lake Eppalock Catchment

3.6b Septic Tank





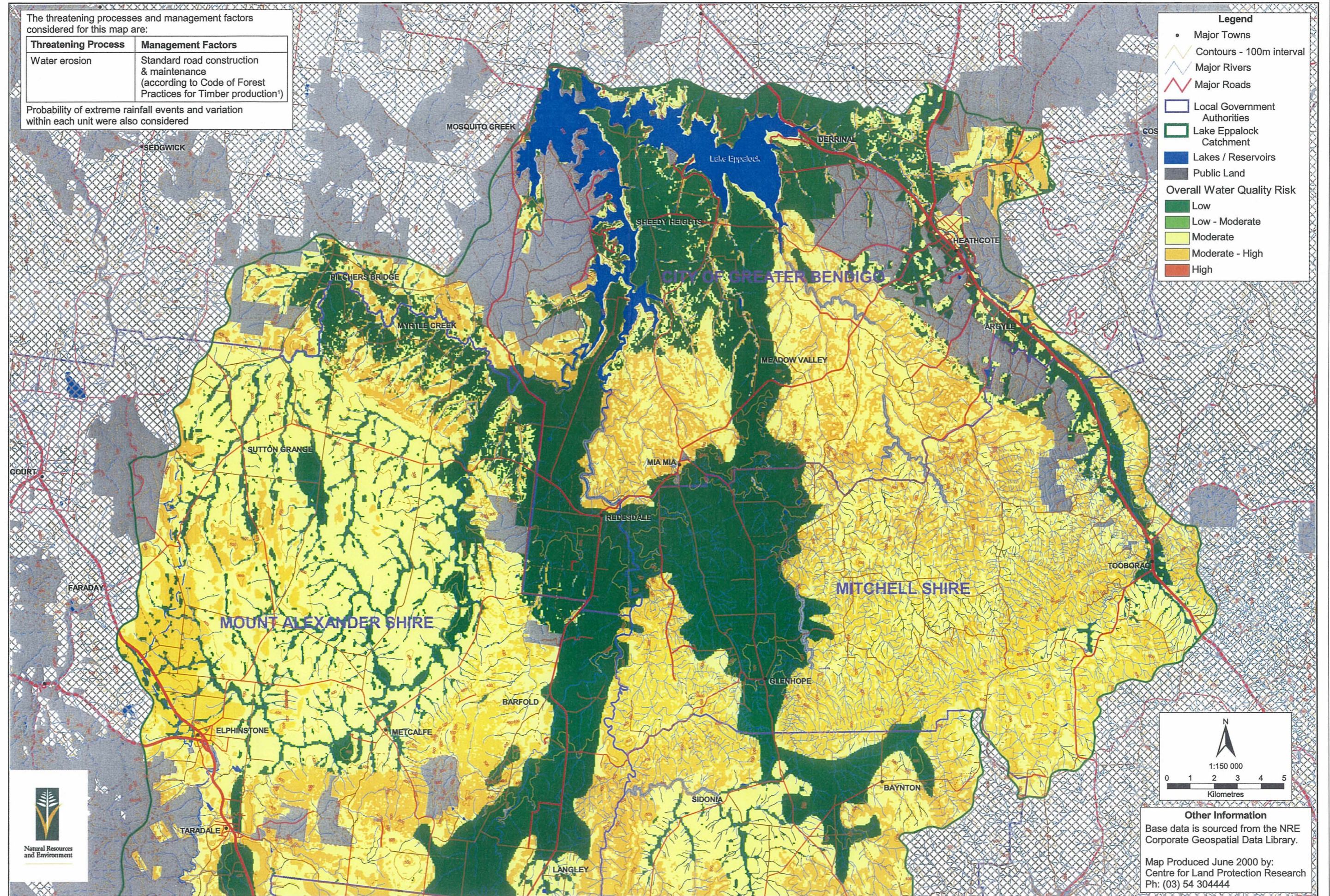
Map 3.7a Risk of Secondary Gravel or Earthen Roding on Water Quality, Northern Lake Eppalock Catchment

Map 3.7a Gravel Roads

The threatening processes and management factors considered for this map are:

Threatening Process	Management Factors
Water erosion	Standard road construction & maintenance (according to Code of Forest Practices for Timber production <sup>1</sup> )

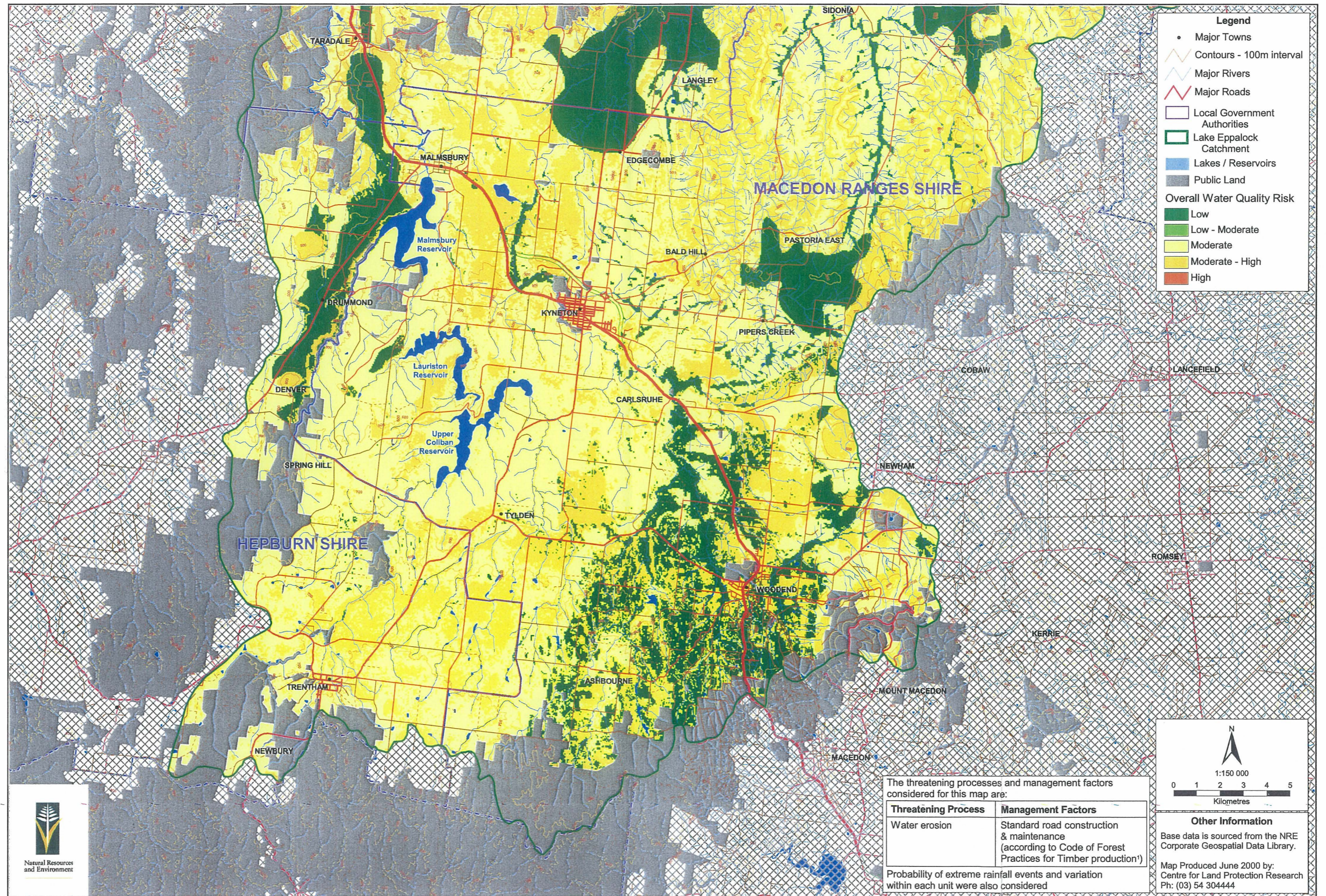
Probability of extreme rainfall events and variation within each unit were also considered





Map 3.7b Risk of Secondary Gravel or Earthen Roding on Water Quality, Southern Lake Eppalock Catchment

3.7b Gravel Roads

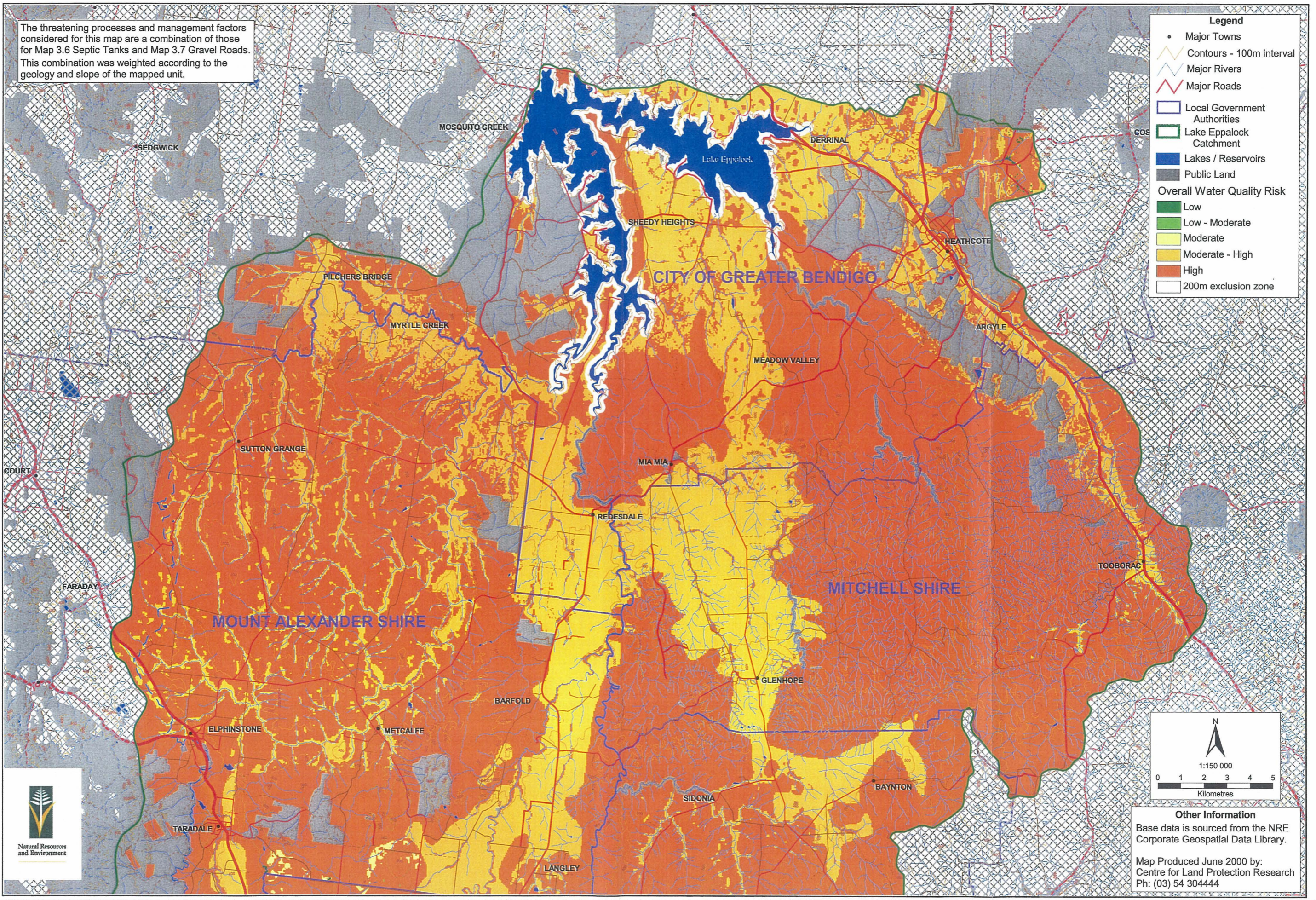




Map 3.8a Risk of Subdivision on Water Quality, Northern Lake Eppalock Catchment

Map 3.8a Subdivision

The threatening processes and management factors considered for this map are a combination of those for Map 3.6 Septic Tanks and Map 3.7 Gravel Roads. This combination was weighted according to the geology and slope of the mapped unit.



**Legend**

- Major Towns
- Contours - 100m interval
- Major Rivers
- Major Roads
- Local Government Authorities
- Lake Eppalock Catchment
- Lakes / Reservoirs
- Public Land

**Overall Water Quality Risk**

- Low
- Low - Moderate
- Moderate
- Moderate - High
- High
- 200m exclusion zone

N

1:150 000

0 1 2 3 4 5

Kilometres

**Other Information**

Base data is sourced from the NRE Corporate Geospatial Data Library.

Map Produced June 2000 by:  
Centre for Land Protection Research  
Ph: (03) 54 304444

