


# Event Board Information

The Mount Alexander Shire Council has 12 event boards available for community use to promote events throughout the shire. There is no cost to have your signs on display, however the cost to produce the sign, install and remove are the responsibility of the event organisers.

If you wish to utilise these event boards please complete the form, which can be found on our website.

Please note your event must be not for profit. Boards can be used for up to 2 weeks.

Refer to the last page for installation instructions.

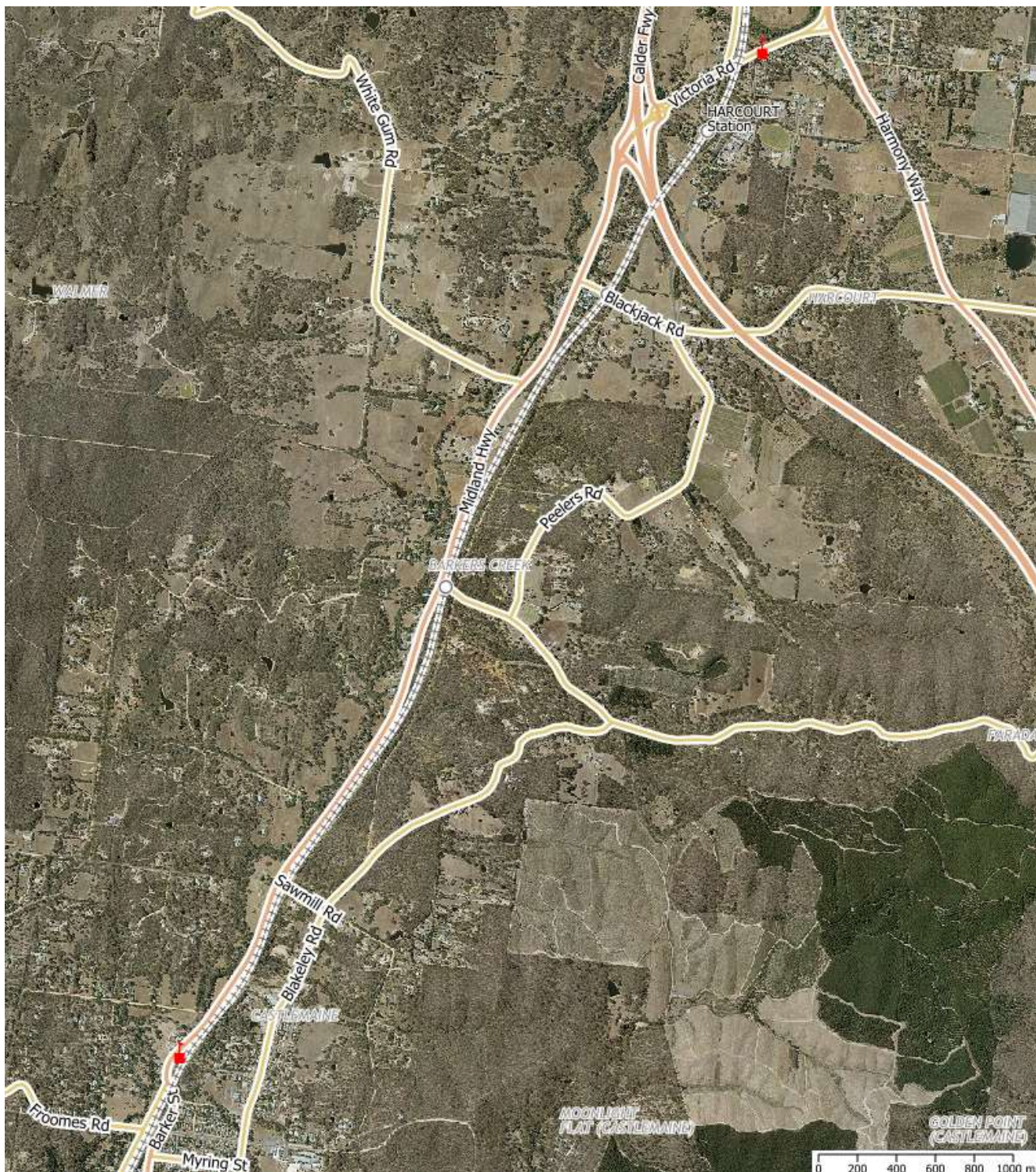
Look for these red markers  on the maps below for exact locations.



- Civic Centre
- Cnr Lyttleton and Lloyd Sts
- P.O Box 185 Castlemaine VIC 3450
- t (03) 5471 1700
- e [info@mountalexander.vic.gov.au](mailto:info@mountalexander.vic.gov.au)
- w [www.mountalexander.vic.gov.au](http://www.mountalexander.vic.gov.au)



**Barkers Creek - Midland Highway (A300) - Approaching Castlemaine from north**  
**Harcourt - Off exit ramp (just past bridge) - Approaching Harcourt from Castlemaine (west)**

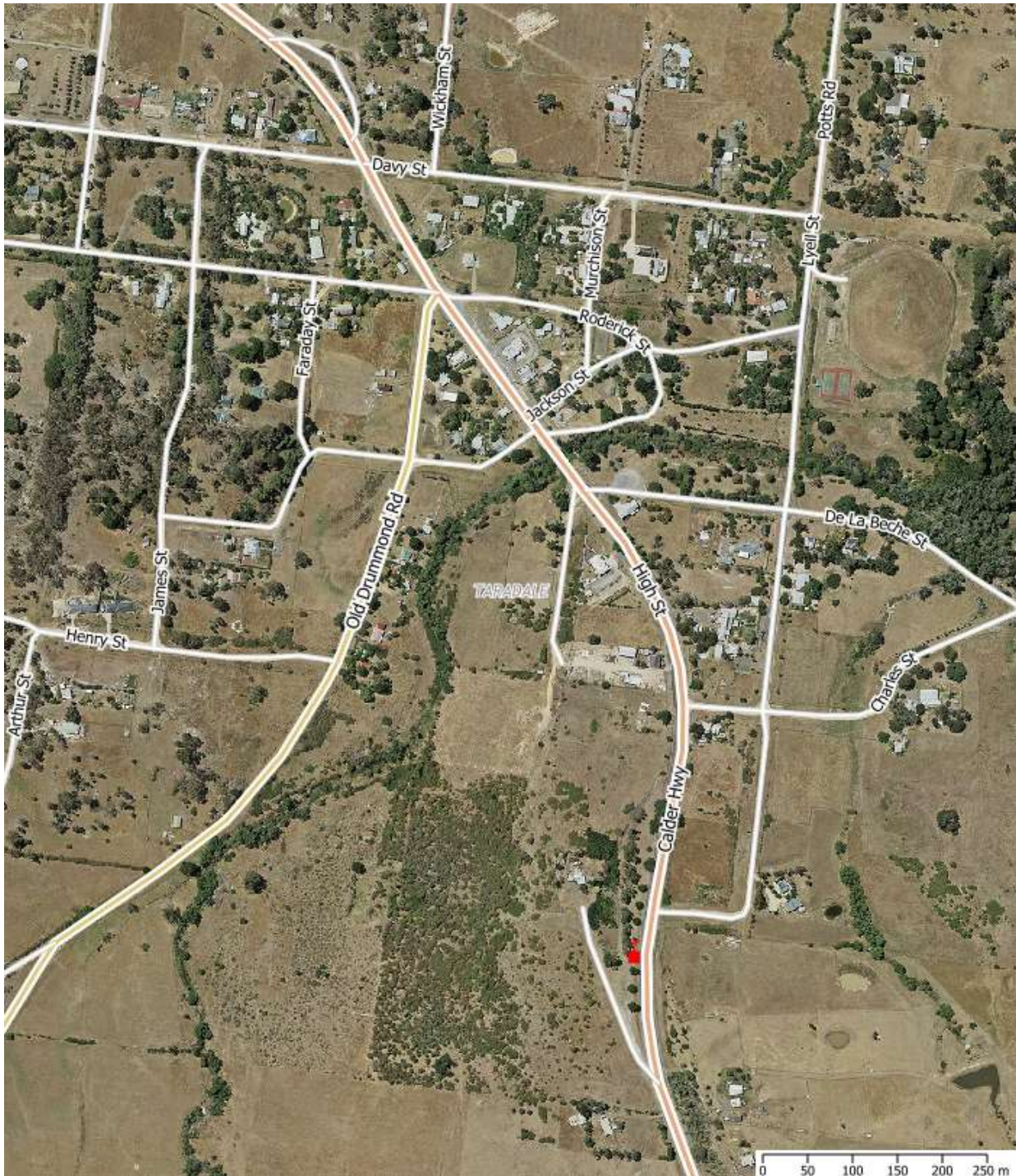


- Civic Centre
- Cnr Lyttleton and Lloyd Sts
- P.O Box 185 Castlemaine VIC 3450
- t (03) 5471 1700
- e [info@mountalexander.vic.gov.au](mailto:info@mountalexander.vic.gov.au)
- w [www.mountalexander.vic.gov.au](http://www.mountalexander.vic.gov.au)





## Taradale - Old Calder Highway - Approaching Taradale from Kyneton (south)

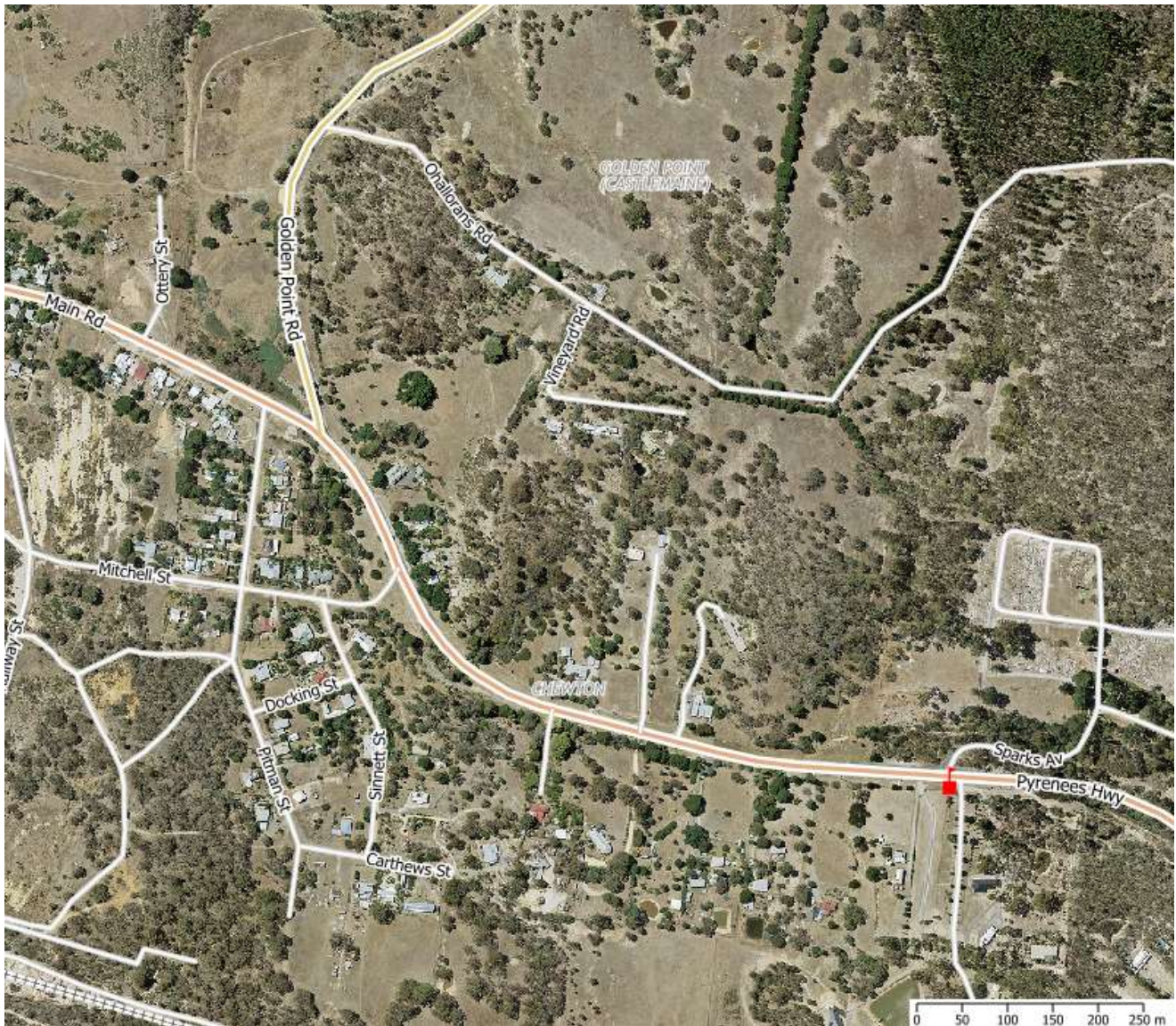


- Civic Centre
- Cnr Lytton and Lloyd Sts
- P.O Box 185 Castlemaine VIC 3450
- t (03) 5471 1700
- e [info@mountalexander.vic.gov.au](mailto:info@mountalexander.vic.gov.au)
- w [www.mountalexander.vic.gov.au](http://www.mountalexander.vic.gov.au)





**Chewton - Pyrenees Highway (B180) - Approaching Chewton/Castlemaine from Calder Hwy (east), opposite Sparks Avenue**

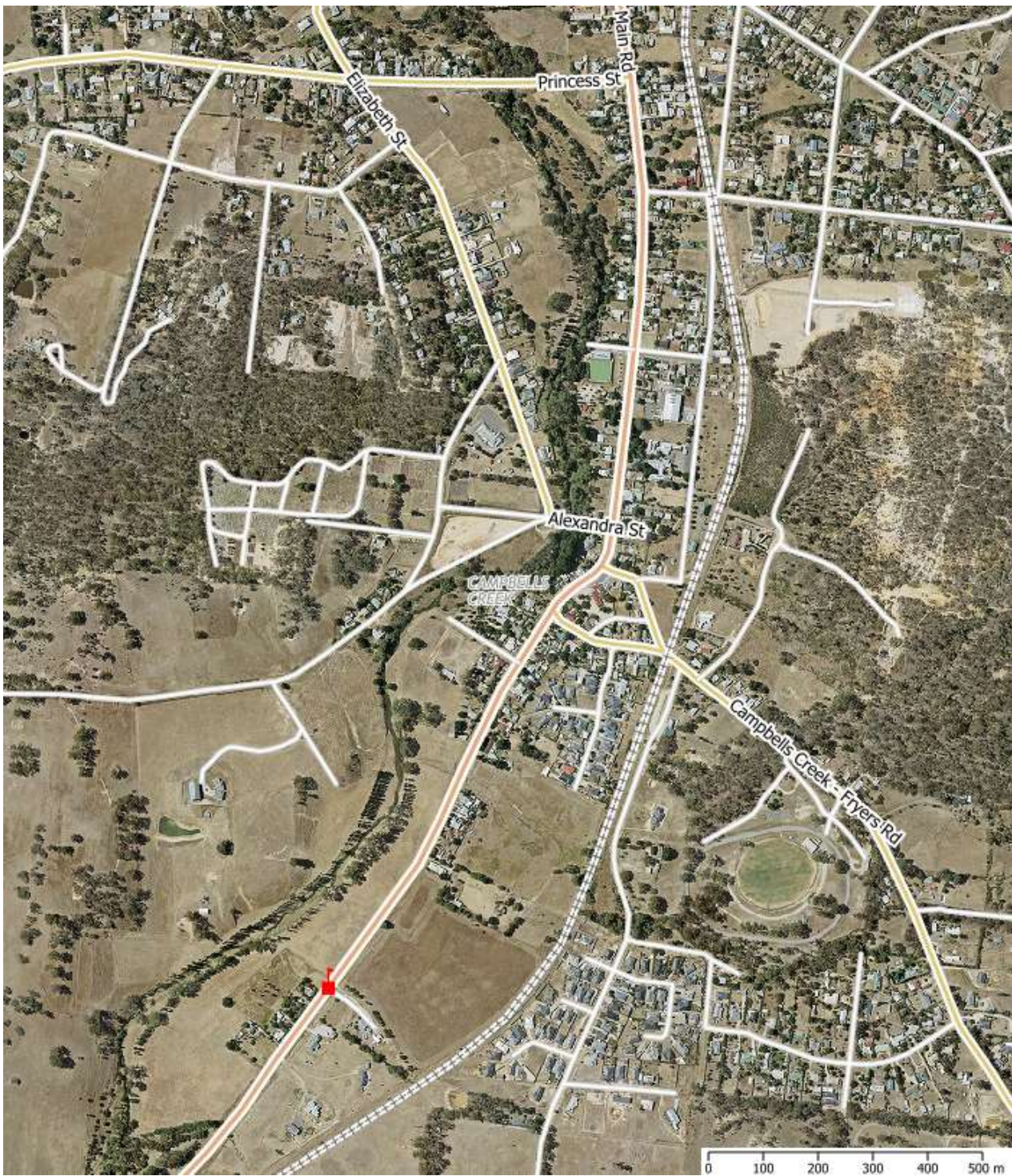


• Civic Centre  
• Cnr Lyttleton and Lloyd Sts  
• P.O Box 185 Castlemaine VIC 3450  
• t (03) 5471 1700  
• e [info@mountalexander.vic.gov.au](mailto:info@mountalexander.vic.gov.au)  
• w [www.mountalexander.vic.gov.au](http://www.mountalexander.vic.gov.au)





**Campbells Creek - Midland Highway (A300) - Approaching Campbells Creek/Castlemaine from Guildford (south)**



- Civic Centre
- Cnr Lytton and Lloyd Sts
- P.O Box 185 Castlemaine VIC 3450
- t (03) 5471 1700
- e [info@mountalexander.vic.gov.au](mailto:info@mountalexander.vic.gov.au)
- w [www.mountalexander.vic.gov.au](http://www.mountalexander.vic.gov.au)





**Guildford - Midland Highway (A300) - Past Pound Lane, approaching Guildford from Daylesford (south)**



- Civic Centre
- Cnr Lytton and Lloyd Sts
- P.O Box 185 Castlemaine VIC 3450
- t (03) 5471 1700
- e [info@mountalexander.vic.gov.au](mailto:info@mountalexander.vic.gov.au)
- w [www.mountalexander.vic.gov.au](http://www.mountalexander.vic.gov.au)



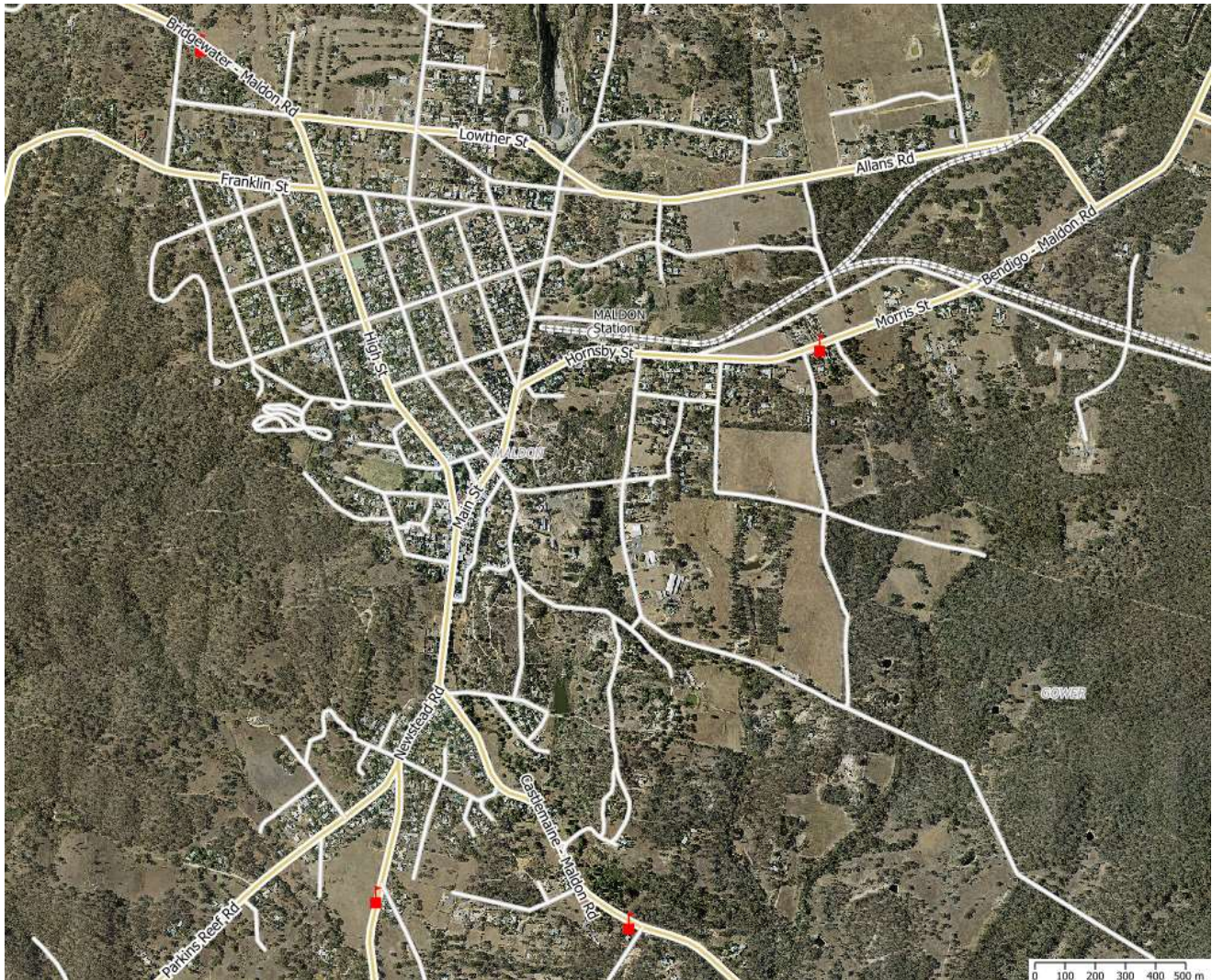


**Maldon/Newstead Rd. (C283) - Approaching Maldon from Newstead (south)**

**Castlemaine/Maldon Rd. (C282) - Past Rows Rd, approaching Maldon from Castlemaine (east)**

**Bendigo/Maldon Rd. (C283) - Approaching Maldon from Bendigo (north)**

**Maldon/Bridgewater Rd. (C282) - Before Golf Club, approaching Maldon from Bridgewater (north-west)**

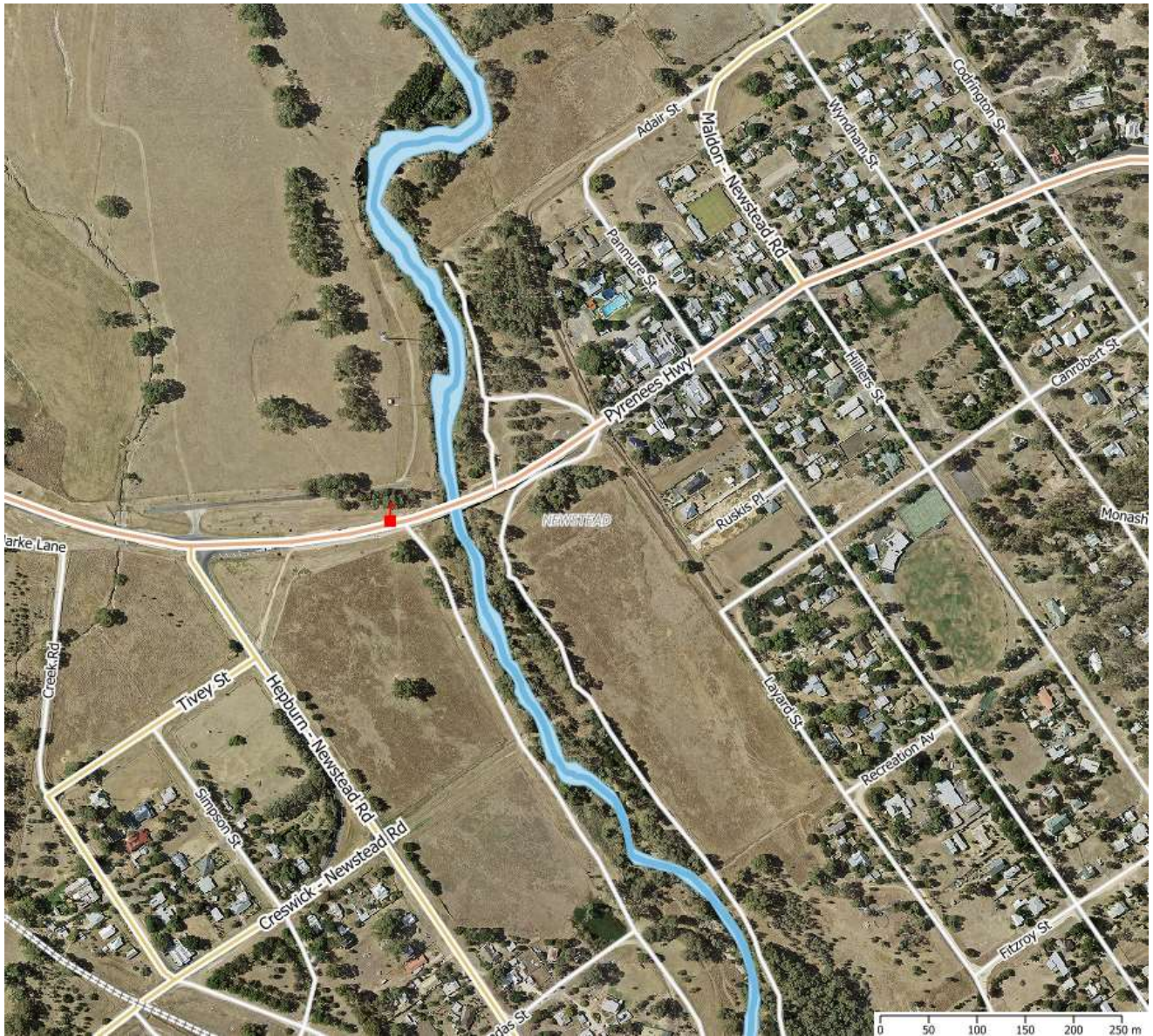


- Civic Centre
- Cnr Lyttleton and Lloyd Sts
- P.O Box 185 Castlemaine VIC 3450
- t (03) 5471 1700
- e [info@mountalexander.vic.gov.au](mailto:info@mountalexander.vic.gov.au)
- w [www.mountalexander.vic.gov.au](http://www.mountalexander.vic.gov.au)





**Newstead - Pyrenees Highway (B180) - Before bridge, approaching Newstead from Maryborough (west)**



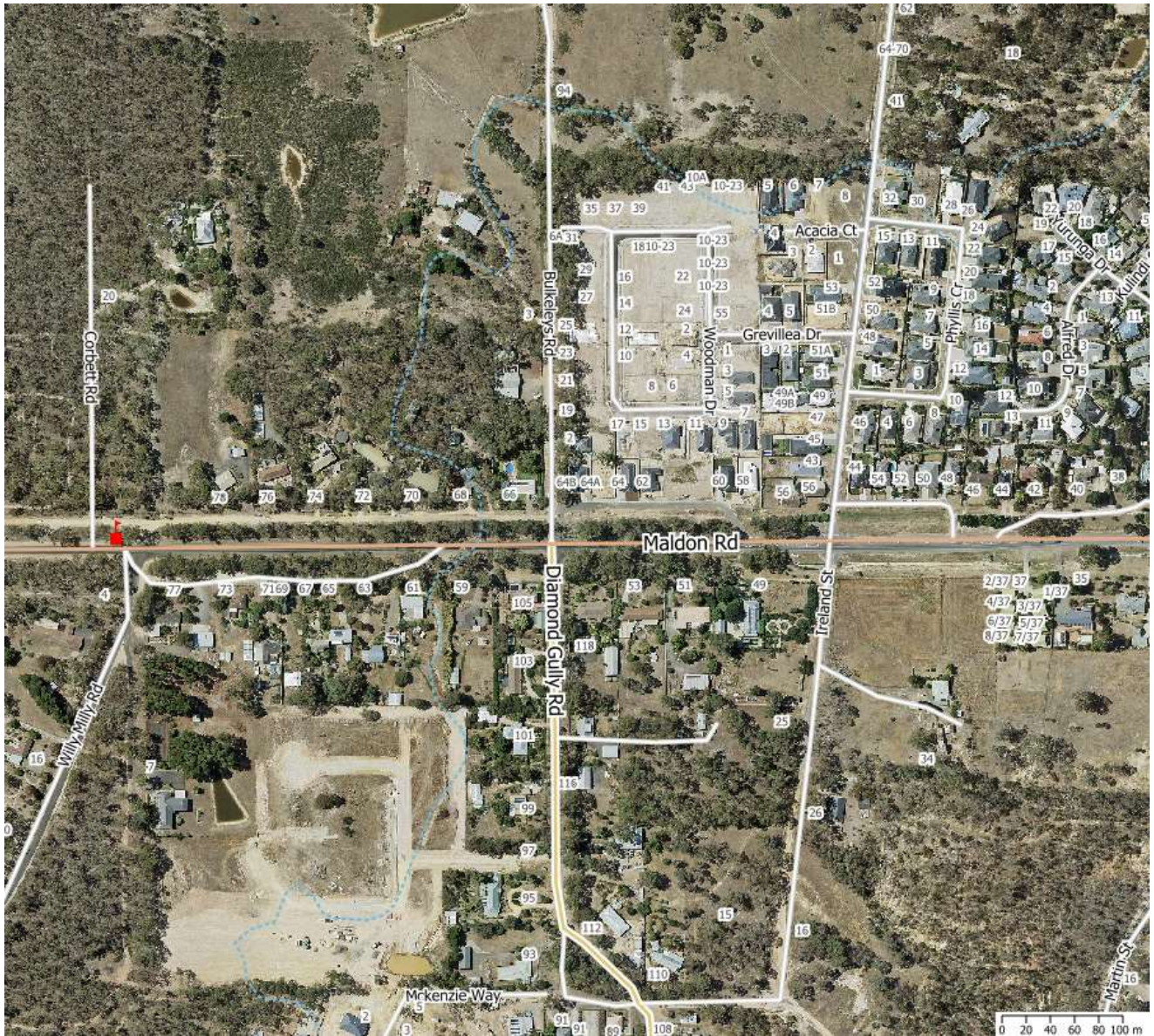
- Civic Centre
- Cnr Lyttleton and Lloyd Sts
- P.O Box 185 Castlemaine VIC 3450
- t (03) 5471 1700
- e [info@mountalexander.vic.gov.au](mailto:info@mountalexander.vic.gov.au)
- w [www.mountalexander.vic.gov.au](http://www.mountalexander.vic.gov.au)



**MOUNT ALEXANDER**  
SHIRE COUNCIL



**McKenzie Hill - Pyrenees Highway (B180) - Past Corbett Road, opposite Willy Milly Rd, approaching Castlemaine from Newstead.**



- Civic Centre
- Cnr Lyttleton and Lloyd Sts
- P.O Box 185 Castlemaine VIC 3450
- t (03) 5471 1700
- e [info@mountalexander.vic.gov.au](mailto:info@mountalexander.vic.gov.au)
- w [www.mountalexander.vic.gov.au](http://www.mountalexander.vic.gov.au)





# Installation Instructions

- The blue line drawn on the sign depicts the frame size, see picture of sign →
- Corflute signs must measure **1220mm x 875mm**
- To install the sign:
  - Unclip the metal side sections of the frame, 4 in total
  - Place the corflute inside the frame
  - Close the metal sides around it
  - Ensure that the frame is closed fully back into position once the corflute sign is inserted to ensure it stays in place
- A ladder will be required if attaching corflute signs to the top section of the board/s
- Don't attach signs with bolts or wire.

## Tips for Sign Design

- Motorists have on average **4 seconds** to read your sign so make sure to keep it simple
- Make sure to include the event name, venue, date and opening hours.
- A max of 4 lines of text is best.
- Text should be no smaller than 100mm in height.
- Logos and pictures only distract the motorist from your core message.
- Stick to contrasting colours like black on white as they are most visible.



Civic Centre  
Cnr Lyttleton and Lloyd Sts  
P.O Box 185 Castlemaine VIC 3450

t (03) 5471 1700  
e [info@mountalexander.vic.gov.au](mailto:info@mountalexander.vic.gov.au)  
w [www.mountalexander.vic.gov.au](http://www.mountalexander.vic.gov.au)

